



1880<sup>®</sup>  
CLUB

SCHOOLWEAR 2023



1880 CLUB is one of the UK and Ireland's leading ranges of children's fashions, famous for its high quality schoolwear and boys' occasion wear.

The range is designed to meet the needs of modern families who want the best for their kids but require clothing engineered to meet the demands of childhood!

1880 CLUB has a long heritage of quality tailoring as part of Douglas and Grahame Ltd - gentlemen's clothiers since 1924. This is evident in the high specification fabrics and appreciation for design which is exemplified in every garment in the range.

More details on the **1880 CLUB** range can be found at [www.1880CLUB.com](http://www.1880CLUB.com)

## Contents

Our Fabrics	Page 4 - 5
Boys' + Girls' Blazers	Page 6 - 11
Trousers, Pinafores + Skirts	Page 12 - 21
Knitwear	Page 20 - 25
Shirts + Ties	Page 26 - 33
Sizing	Page 36





made for the long term

1880<sup>®</sup>  
CLUB





Garments available from stock all year round in a wide variety of colours and specially developed fabrics – as well as an extensive made-to-order service







Our fabrics are developed exclusively for us and we dedicate ourselves to using the most innovative technology to create products which are made to last.

#### Extra-Weight Polyester

We use a 100% polyester octalobal yarn for a matt finish and a baratheia weave structure, innovatively developed for 1880 CLUB to ensure a hard wearing and low pilling performance.

#### Melton

A choice of traditional all-wool with water and stain repellent finish or the new contemporary wool-poly for a more comfortable fit, lasting performance with eco friendly water and stain repellent finish.

#### Evalast

This PV hopsack fabric, exclusive to 1880 CLUB, is specially designed to reduce pilling and has a Teflon EcoElite™ finish.

#### Duratech

This technically special PV 2x2 twill for trousers is unique to 1880 CLUB and is strong in construction to give good durability in wear. Teflon EcoElite™ is also applied.

#### Stretch

Answering the call from the more fashion focussed for skinnier trouser lines, we use an elastane stretch twill to maintain a high level of comfort and freedom of movement in a very slim fit. This fabric is finished with a Teflon EcoElite™ coating for added durability.

#### Shirting

We invest in a heavier than standard shirting construction with our fabrics using 20% more weft yarns. Naturally easy to iron and durable for frequent laundering whilst retaining brightness.





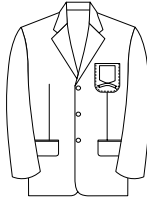


# Blazers





# Boys + Girls' Blazers



## MELTON BLAZERS

Button 3 choice of patch or flap pockets, matching buttons.

Boys' standard fit blazer with no vents (BSB).

Boys' tapered fit blazer with no vents (BTB).

Girls' standard fit blazer with no vents (GSB)

Girls' fitted blazer with no vents (GFB).

Includes embroidered badge.

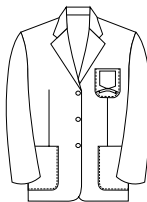
CALL No.	COLOUR	SIZES AVAILABLE
BTB - 13289	00 / BLACK	JUNIOR 5 x 14 S/R/L
GFB - 13289	28 / NAVY	SENIOR 15 x 26 S/R/L
	78 / DARK NAVY	

For Special Colours See:

CALL No.	COLOUR	SIZES AVAILABLE
BSB - 13299	26 / BRIGHT ROYAL	JUNIOR 5 x 14 S/R/L
GSB - 13299	27 / ROYAL BLUE	SENIOR 15 x 26 S/R/L
	29 / DARK NAVY	
	67 / BURGUNDY	

80% WOOL, 20% POLYESTER

Special styles and colours available on request



## POLYESTER WOOL BLAZERS

Button 2 or 3, 3 patch pockets, matching buttons.

Boys' standard fit blazer with side vents (BSB).

Boys' tapered fit blazer with side vents (BTB).

Girls' fitted blazer with no vents (GFB).

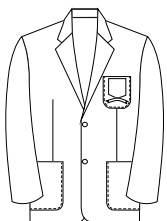
Includes embroidered badge.

CALL No.	COLOUR	SIZES AVAILABLE
BTB - 14259	27 / NAVY	JUNIOR 5 x 14 S/R/L
GFB - 14259	79 / DARK NAVY	SENIOR 15 x 26 S/R/L

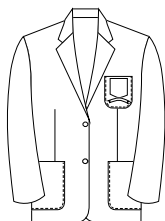
55% POLYESTER, 45% WOOL

Special styles and colours available on request

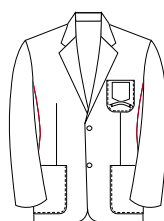
## BLAZER FIT OPTIONS



BSB - BOYS' STANDARD BLAZER



GSB - GIRLS' STANDARD BLAZER



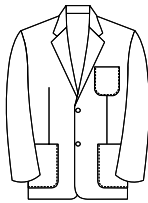
BTB - BOYS' TAPERED BLAZER



GFB - GIRLS' FITTED BLAZER



# Boys + Girls' Blazers



## EXTRA-WEIGHT POLYESTER BLAZERS

Button 2, 3 patch pockets, matching buttons.  
 Boys' standard fit blazer with side vents (BSB).  
 Boys' tapered fit blazer with side vents (BTB).  
 Girls' standard fit blazer with no vents (GSB).  
 Girls' fitted blazer with no vents (GFB).

## UNBADGED BLAZERS

Includes Zip Entry System for direct embroidery.

CALL No.	COLOUR	SIZES AVAILABLE
BTB - 12290	00 / BLACK	JUNIOR 5 x 14 S/R/L
GFB - 12291	78 / NAVY	SENIOR 15 x 26 S/R/L

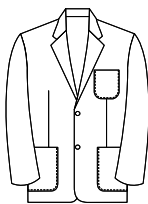
## BADGED BLAZERS

Includes embroidered badge

CALL No.	COLOUR	SIZES AVAILABLE
BSB - 12199	WIDE RANGE	JUNIOR 5 x 14 S/R/L
GSB - 12199		SENIOR 15 x 26 S/R/L
BTB - 12299		
GFB - 12299		

100% POLYESTER, BARATHEA

Special styles and colours available on request



## POLYESTER TWILL BLAZERS

Button 2, 3 patch pockets, matching buttons.  
 Boys' standard fit blazer with side vents (BSB).  
 Boys' tapered fit blazer with side vents (BTB).  
 Girls' standard fit blazer with no vents (GSB).  
 Girls' fitted blazer with no vents (GFB).

## BADGED BLAZERS

Includes embroidered badge

CALL No.	COLOUR	SIZES AVAILABLE
BTB - 12179	03 / LIGHT GREY	JUNIOR 5 x 14 S/R/L
GFB - 12179	25 / ROYAL BLUE	SENIOR 15 x 26 S/R/L
BTB - 12279		
GFB - 12279		

100% POLYESTER, TWILL

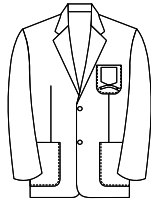
Special styles and colours available on request

### COLOUR OPTIONS





## Boys + Girls' Blazers



### EVALAST POLYESTER/VISCOSE BLAZERS

Button 2, 3 patch pockets, matching buttons.  
Boys' standard fit blazer with side vents (BSB).  
Boys' tapered fit blazer with side vents (BTB).  
Girls' standard fit blazer with no vents (GSB).  
Girls' fitted blazer with no vents (GFB).

### UNBADGED BLAZERS

Includes Zip Entry System for direct embroidery.

CALL No.	COLOUR	SIZES AVAILABLE
BTB - 12250	00 / BLACK	JUNIOR 5 x 14 S/R/L
GFB - 12251	78 / NAVY	SENIOR 15 x 26 S/R/L

### BADGED BLAZERS

Includes embroidered badge.

CALL No.	COLOUR	SIZES AVAILABLE
BSB - 12159	00 / BLACK	JUNIOR 5 x 14 S/R/L
GSB - 12159	78 / NAVY	SENIOR 15 x 26 S/R/L
BTB - 12259	28 / NAVY	
GFB - 12259		

65% POLYESTER, 35% VISCOSE **EVALAST**

Special styles and colours available on request



**Additional styling options can include:**  
straight or slanted pockets; jetted, flap or patch pockets; braiding, taping, high-vis reflective taping; custom embroidery and many, many more options available in any combination.







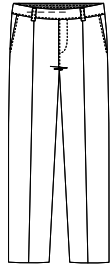




# Trousers Skirts + Pinafores



## Boys' Trousers

**ELASTICATED BACK MOCK FLY TROUSER**

Plain front, pull up trouser.

CALL No.	COLOUR	SIZES AVAILABLE
62688	05 / MID GREY 79 / NAVY	JUNIOR 98 x 163

65% POLYESTER, 35% VISCOSE **DURATECH****ELASTICATED BACK MOCK FLY SHORT**

Pleated front, pull up short.

CALL No.	COLOUR	SIZES AVAILABLE
62679	04 / MID GREY	JUNIOR 2 x 11

65% POLYESTER, 35% VISCOSE **DURATECH****ELASTICATED BACK SHORT**

Plain front short, hook and bar fastening.

CALL No.	COLOUR	SIZES AVAILABLE
62677	05 / MID GREY	JUNIOR 98 x 152

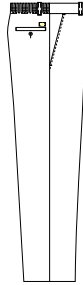
65% POLYESTER, 35% VISCOSE **EVALAST**

## COLOUR OPTIONS





## Boys' Trousers

**ELASTICATED BACK TROUSER**

Plain front trouser, elasticated back, hook and bar fastening, belt loops, slim leg.

CALL No.	COLOUR	SIZES AVAILABLE
62300	00 / BLACK 05 / MID GREY	JUNIOR 116 x 163 JUNIOR PLUS FIT*

65% POLYESTER, 35% VISCOSE **EVALAST**



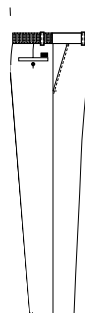
\* Please refer to size conversion chart on the back cover

CALL No.	COLOUR	SIZES AVAILABLE
62763	00 / BLACK 05 / MID GREY 09 / CHARCOAL 79 / NAVY	JUNIOR 116 x 163 JUNIOR PLUS FIT*

65% POLYESTER, 35% VISCOSE **DURATECH**



\* Please refer to size conversion chart on the back cover

**SKINNY ELASTICATED BACK TROUSER**

Plain front trouser, elasticated back, hook and bar fastening, belt loops, skinny leg.

CALL No.	COLOUR	SIZES AVAILABLE
62765	00 / BLACK 05 / MID GREY 09 / CHARCOAL 79 / NAVY	JUNIOR 116 x 163

65% POLYESTER, 35% VISCOSE **DURATECH**



\* Please refer to size conversion chart on the back cover



# Men's + Youths' Trousers



## SKINNY LEG

Plain front, slim leg, belted.

CALL No.	COLOUR	SIZES AVAILABLE
72765	00 / BLACK	MEN'S: 30 x 44
	034 / SILVER	S/R/L/XL
	05 / MID GREY	YOUTHS': JUNIOR
	06 / MID GREY	23 x 28 S/R/L
	09 / CHARCOAL	YOUTHS': SENIOR
	79 / NAVY	29 x 32 S/R/L

65% POLYESTER, 35% VISCOSE **DURATECH**



CALL No.	COLOUR	SIZES AVAILABLE
72400	00 / BLACK	MEN'S: 30 x 44
	05 / MID GREY	S/R/L/XL
	09 / CHARCOAL	YOUTHS': JUNIOR
		23 x 28 S/R/L
	YOUTHS': SENIOR	
	29 x 32 S/R/L	

65% POLYESTER, 35% VISCOSE **EVALAST**



\* Please refer to size conversion chart on the back cover

CALL No.	COLOUR	SIZES AVAILABLE
72751	00 / BLACK	MEN'S: 30 x 44
	05 / MID GREY	S/R/L/XL
	09 / CHARCOAL	

65% POLYESTER, 35% VISCOSE **EVALAST**



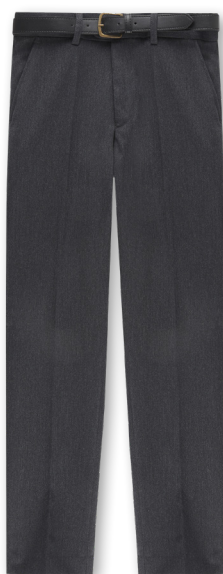
\* Please refer to size conversion chart on the back cover

## COLOUR OPTIONS





## Men's + Youths' Trousers

**SUPER SKINNY LEG**

Plain front, super skinny leg, belted.

CALL No.	COLOUR	SIZES AVAILABLE
72800	00 / BLACK	YOUTHS': JUNIOR
	05 / MID GREY	23 x 28 S/R/L
	09 / CHARCOAL	YOUTHS': SENIOR
		29 x 32 S/R/L
		MEN'S: 30 x 44 S/R/L/XL

64% POLYESTER, 34% VISCOSE, 2% LYCRA

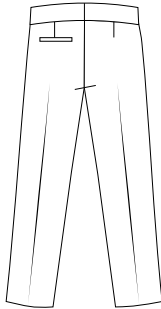
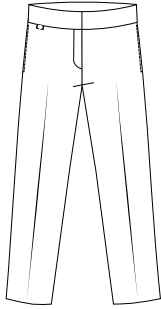


\* Please refer to size conversion chart on the back cover





## Ladies's + Girls' Trousers



### SLIM LEG

Plain Front, Straight Side Pockets, Hip Pocket, Tunnel adjuster in waistband

CALL No.	COLOUR	SIZES AVAILABLE
72811	00 / BLACK 05 / MID GREY	LADIES 32 x 40 R/L GIRLS': SENIOR 29 X 30 R/L GIRLS': JUNIOR 24 X 28 R/L

64% POLYESTER, 34% VISCOSE, 2% LYCRA



### COLOUR OPTIONS



Black



Mid Grey













# Skirts + Pinafores

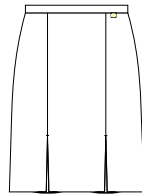
REF.	CALL NO	COLOUR	SIZES AVAILABLE	
<b>A</b>	93933	04 / MID GREY	Waist from 22 - 40 Length from 18 - 28	65% POLY, 35 VISCOSE <b>DURATECH</b> 
	92908	00 / BLACK 38 / BOTTLE 68 / WINE	Waist from 22 - 40 Length from 18 - 28	100% POLY Extra Weight
<b>B</b>	93932	00 / BLACK 04 / MID GREY 06 / MID GREY 09 / CHARCOAL 78 / NAVY 79 / NAVY	Waist from 22 - 40 Length from 18 - 26	65% POLY, 35 VISCOSE <b>DURATECH</b> 
	93934	37 / GREEN	Waist from 22 - 40 Length from 18 - 26	65% POLY, 35 VISCOSE Special Colour
	95401	48 / BROWN	Waist from 22 - 40 Length from 18 - 26	65% POLY, 35 VISCOSE Special Colour
	93921	00 / BLACK 26 / BRIGHT ROYAL 39 / BOTTLE 69 / MAROON 78 / NAVY	Waist from 22 - 40 Length from 18 - 26	100% POLY Extra Weight
	95409	38 BRONZE	Waist from 22 - 40 Length from 18 - 26	65% POLY, 35 VISCOSE Special Colour
	95412	24 ROYAL BLUE 25 AIR FORCE BLUE	Waist from 22 - 40 Length from 18 - 26	55% POLY, 45 WOOL Special Colour
<b>C</b>	92946	00 / BLACK 06 / MID GREY 79 / NAVY	Waist from 22 - 40 Length from 16 - 22	65% POLY, 35 VISCOSE <b>DURATECH</b> 
	92936	26 / BRIGHT ROYAL 39 / BOTTLE 79 / NAVY	Waist from 22 - 40 Length from 16 - 22	100% POLY Extra Weight
<b>D</b>	92949	04 MID GREY	Waist from 22 - 38 Length from 18 - 22	65% POLY, 35 VISCOSE <b>DURATECH</b> 
	93929	79 NAVY	Waist from 22 - 38 Length from 18 - 22	100% POLY Extra Weight
<b>E</b>	95907	04 / MID GREY	Waist from 22 - 42 Length from 18 - 26	65% POLY, 35 VISCOSE <b>DURATECH</b> 

Other styles or colours available on request

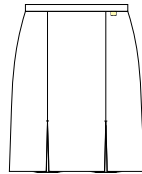




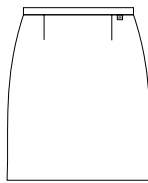
## Skirts + Pinafores

**REF: A**  
**SKIRT WITH LONG  
INVERTED PLEATS**

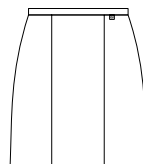
Fully lined, side zip opening, invisible zip side pocket.

**REF: B**  
**SKIRT WITH KICK PLEATS**

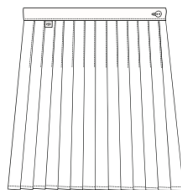
Pleats front and back, half lined, side zip opening, invisible zip side pocket.

**REF: C**  
**STRAIGHT SKIRT**

Side zip opening, invisible zip side pocket.

**REF: D**  
**6 GORE SKIRT**

Lined centre back panel, side zip opening, invisible zip side pocket.

**REF: E**  
**STITCHED DOWN PLEATED SKIRT**

Button and side zip opening, tunnel adjuster and internal pocket.





# Knitwear



## Boys' + Girls' Knitwear



### PILBLOC 100% ACRYLIC V-NECK SWEATER

REGULAR ALL NEEDLES KNIT. RIBBED STRAIGHT CUFFS & HEM WITH RAGLAN SLEEVE.

The next generation of Anti-Pill fibre. Exceptional softness for maximum comfort combined with hard wearing performance. Machine washable retains shape & good appearance.

#### CALL No. COLOUR

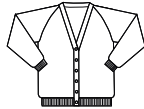
51780 05 / GREY  
24 / ROYAL BLUE  
25 / DARK BLUE  
38 / BOTTLE  
45 / BROWN  
66 / MAROON  
76 / DARK PURPLE  
78 / NAVY

#### SIZES AVAILABLE

JUNIOR 24 X 40  
SENIOR 42 X 50



Also available as crew neck - Call No. 51781



### PILBLOC 100% ACRYLIC CARDIGAN

REGULAR ALL NEEDLES KNIT. RIBBED STRAIGHT CUFFS & HEM WITH RAGLAN SLEEVE.

The next generation of Anti-Pill fibre. Exceptional softness for maximum comfort combined with hard wearing performance. Machine washable retains shape & good appearance.

#### CALL No. COLOUR

51782 05 / GREY  
24 / ROYAL BLUE  
25 / DARK BLUE  
38 / BOTTLE  
45 / BROWN  
66 / MAROON  
76 / DARK PURPLE  
78 / NAVY

#### SIZES AVAILABLE

JUNIOR 24 X 40  
SENIOR 42 X 50



### COTTON RICH RAGLAN SLEEVE SWEATER (70% COTTON/30% POLYAMIDE).

V-NECK SWEATER IS MADE FROM A COTTON RICH BLEND FOR ULTIMATE COMFORT AND BREATHABILITY. FINE KNIT MAKES THIS SWEATER A LAYERING PERFECTION.

#### CALL No. COLOUR

51777 02 / LIGHT GREY

#### SIZES AVAILABLE

JUNIOR 24 X 40  
SENIOR 42 X 50

Special colours available on request



## Boys' + Girls' Knitwear

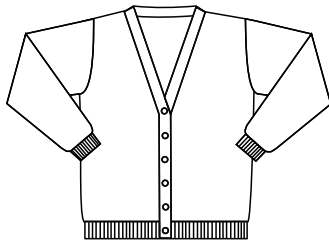
**SLIM FIT 50% COTTON / 50% ACRYLIC  
V-NECK SWEATER**

FINE 14 GAUGE ALL NEEDLES KNIT, RIBBED STRAIGHT CUFFS & HEM WITH SET-IN SLEEVES.

CALL No.	COLOUR	SIZES AVAILABLE
51770	00 / BLACK 37 / GREEN 381 / PINE 65 / RED 78 / NAVY	27 / DARK BLUE 38 / BOTTLE 45 / BROWN 67 MED BURGUNDY JUNIOR 24 x 40 SENIOR 42 x 50

Embroidery, tipping and special colours available on request.

Also available as crew neck - Call No. 51771

**SLIM FIT 50% COTTON / 50% ACRYLIC  
CARDIGAN**

FINE 14 GAUGE ALL NEEDLE KNIT, RIBBED STRAIGHT CUFFS & HEM, WITH SET-IN SLEEVES.

CALL No.	COLOUR	SIZES AVAILABLE
51772	00 / BLACK 37 / GREEN 381 / PINE 65 / RED 78 / NAVY	27 / DARK BLUE 38 / BOTTLE 45 / BROWN 67 MED BURGUNDY JUNIOR 24 x 40 SENIOR 42 x 50

Embroidery, tipping and special colours available on request.

**50% WOOL / 50% ACRYLIC V-NECK SWEATER**

REGULAR ALL NEEDLES KNIT, RIBBED STRAIGHT CUFFS & HEM WITH RAGLAN SLEEVES.

Knitted sweater from a high quality wool mix yarn, which will ensure extra warmth.

CALL No.	COLOUR	SIZES AVAILABLE
51753	00 / BLACK 48 / BROWN 78 / NAVY	JUNIOR 24 X 40 SENIOR 42 X 50



EMBROIDERY,  
TIPPING AND  
SPECIAL COLOURS  
AVAILABLE ON  
REQUEST.

1880 CLUB continue to offer a made-to-order service, with special fabrication and colours.

The brand also offers embroidered crests, special trims and braids all with a fast, efficient stock service on core lines.







# Shirts + Ties



## Short Sleeve Shirts



### BOYS' SHORT SLEEVE SHIRT REGULAR FIT

'Twin Pack', placket front, tailed hem. Includes chest pocket.

CALL No.	COLOUR	SIZES AVAILABLE
25206	01 / WHITE	JUNIOR 11 x 14
	08 / GREY	SENIOR 14.5 x 17.5
	22 / BLUE	

---

25216	SPECIAL COLOURS DYED TO MATCH	JUNIOR 11 x 14 SENIOR 14.5 x 17.5
-------	----------------------------------	--------------------------------------

65% POLYESTER, 35% COTTON EASY CARE



### BOYS' SHORT SLEEVE SHIRT SLIM FIT

'Twin Pack', placket front, tailed hem. No chest pocket.

CALL No.	COLOUR	SIZES AVAILABLE
25306	01 / WHITE	JUNIOR 11 x 14
	08 / GREY	SENIOR 14.5 x 17.5
	22 / BLUE	

65% POLYESTER, 35% COTTON EASY CARE



### GIRLS' SHORT SLEEVE SHIRT REGULAR FIT

'Twin Pack', French front, straight hem. Includes chest pocket.

CALL No.	COLOUR	SIZES AVAILABLE
25206G	01 / WHITE	JUNIOR 24 x 36
	22 / BLUE	SENIOR 38 x 44

65% POLYESTER, 35% COTTON EASY CARE



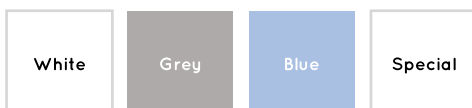
### GIRLS' SHORT SLEEVE SHIRT SLIM FIT

'Twin Pack', French front, tailed hem. No chest pocket

CALL No.	COLOUR	SIZES AVAILABLE
25306G	01 / WHITE	JUNIOR 24 x 36
	22 / BLUE	SENIOR 38 x 44

65% POLYESTER, 35% COTTON EASY CARE

Special colours available on request.



# Long Sleeve Shirts



## BOYS' LONG SLEEVE SHIRT REGULAR FIT

'Twin Pack', placket front, tailed hem.  
Includes chest pocket.

CALL No.	COLOUR	SIZES AVAILABLE
25200	01 / WHITE	JUNIOR 11 x 14
	08 / GREY	SENIOR 14.5 x 17.5
	22 / BLUE	

25215	SPECIAL COLOURS DYED TO MATCH	JUNIOR 11 x 14 SENIOR 14.5 x 17.5
-------	----------------------------------	--------------------------------------

65% POLYESTER, 35% COTTON      **EASY CARE**



## BOYS' LONG SLEEVE SHIRT SLIM FIT

'Twin Pack', placket front, tailed hem. No  
chest pocket.

CALL No.	COLOUR	SIZES AVAILABLE
25300	01 / WHITE	JUNIOR 11 x 14
	08 / GREY	SENIOR 14.5 x 17.5
	22 / BLUE	

25311	SPECIAL COLOURS DYED TO MATCH	JUNIOR 11 x 14 SENIOR 14.5 x 17.5
-------	----------------------------------	--------------------------------------

65% POLYESTER, 35% COTTON      **EASY CARE**



## GIRLS' LONG SLEEVE SHIRT REGULAR FIT

'Twin Pack', French front, straight hem. Includes  
chest pocket.

CALL No.	COLOUR	SIZES AVAILABLE
25200G	01 / WHITE	JUNIOR 24 x 36
	08 / GREY	SENIOR 38 x 44
	22 / BLUE	

25215G	SPECIAL COLOURS DYED TO MATCH	JUNIOR 24 x 36 SENIOR 38 x 44
--------	----------------------------------	----------------------------------

65% POLYESTER, 35% COTTON      **EASY CARE**



## GIRLS' LONG SLEEVE SHIRT SLIM FIT

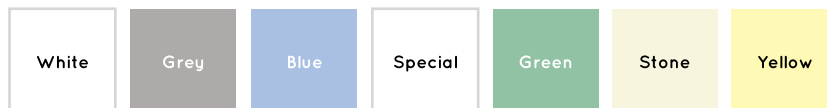
'Twin Pack', French front, tailed hem. No chest  
pocket.

CALL No.	COLOUR	SIZES AVAILABLE
25300G	01 / WHITE	JUNIOR 28 x 36
	22 / BLUE	SENIOR 38 x 44

25311G	SPECIAL COLOURS DYED TO MATCH	JUNIOR 28 x 36 SENIOR 38 x 44
--------	----------------------------------	----------------------------------

65% POLYESTER, 35% COTTON      **EASY CARE**

Special colours available on request.





## Revere Shirts + Blouses



### GIRLS' REVERE LONG SLEEVE SHIRT SLIM FIT

'Twin Pack', French front, tailed hem.  
No chest pocket

CALL No.	COLOUR	SIZES AVAILABLE
25320G	01 / WHITE 22 / BLUE	JUNIOR 28 x 36 SENIOR 38 x 44

65% POLYESTER, 35% COTTON EASY CARE

CALL No.	COLOUR	SIZES AVAILABLE
25323G	SPECIAL COLOURS DYED TO MATCH	JUNIOR 28 x 36 SENIOR 38 x 44

65% POLYESTER, 35% COTTON EASY CARE



### GIRLS' REVERE SHORT SLEEVE REGULAR FIT

'Twin Pack', French front, tailed hem. No chest pocket

CALL No.	COLOUR	SIZES AVAILABLE
25229G	01 / WHITE 22 / BLUE	JUNIOR 28 x 36 SENIOR 38 x 44

65% POLYESTER, 35% COTTON EASY CARE

Special colours available on request.



# Special Shirts + Blouses



## SHIRT SPECIALS

Designs / embroidery developed on request.

EXAMPLE ILLUSTRATED

**CALL No. 25332G**

**65% POLYESTER % 35% COTTON DYED STRIPE**



## SHIRT SPECIALS

Designs / embroidery developed on request.

EXAMPLE ILLUSTRATED

**CALL No. 25223G**

**65% POLYESTER 35% COTTON PRINTED CHECK**



## SHIRT SPECIALS

Designs / embroidery developed on request.

EXAMPLE ILLUSTRATED

**CALL No. 25331**

**65% POLYESTER, 35% COTTON PRINTED STRIPE**



## Striped Ties



### JUNIOR ELASTICATED TIES

Sizes: Blade width - 6.0cm, Length - 30.5cm

Special colours and combinations can be developed on request.

CALL No. TES1001

100% POLYESTER

Minimums = 100 Pieces Per Design/Colour



### JUNIOR (YEAR 8 - 12) TIES

Sizes: Blade width - 7.5cm, Length - 114cm

Special colours and combinations can be developed on request.

CALL No. TS1001

100% POLYESTER

Minimums = 100 Pieces Per Design/Colour



### SENIOR (YEAR 13 - 14) TIES

Sizes: Blade width - 7.5cm, Length - 137cm

Special colours and combinations can be developed on request.

CALL No. TS1002

100% POLYESTER

Minimums = 100 Pieces Per Design/Colour

## Jacquard Ties



### JUNIOR ELASTICATED TIES

Sizes: Blade width - 6.0cm, Length - 30.5cm

Special colours and combinations can be developed on request.

Special jacquards, logos and badges developed on request.

**CALL No. TEJ2001**

**100% POLYESTER**

.....

**Minimums - 100 Pieces Per Design/Colour**



### JUNIOR (YEAR 8 - 12) TIES

Sizes: Blade width - 7.5cm, Length - 114cm

Special colours and combinations can be developed on request.

Special jacquards, logos and badges developed on request.

**CALL No. TJ2001**

**100% POLYESTER**

.....

**Minimums - 100 Pieces Per Design/Colour**



### SENIOR (YEAR 13 - 14) TIES

Sizes: Blade width - 7.5cm, Length - 137cm

Special colours and combinations can be developed on request.

Special jacquards, logos and badges developed on request.

**CALL No. TJ2002**

**100% POLYESTER**

.....

**Minimums - 100 Pieces Per Design/Colour**



# Who says school should be all work and no play?

Distributed by  
Douglas and Grahame Ltd

For further information  
Phone (028) 9332 7777  
Email [enquiries@1880CLUB.com](mailto:enquiries@1880CLUB.com)  
[www.1880CLUB.com](http://www.1880CLUB.com)

1880<sup>®</sup>  
CLUB







## BOYS' & YOUTHS' SIZE CONVERSION CHART

Height	Blazers		Boys' Trousers	Youths' Trousers	Classic Shirts	Knitwear	
	Size	Chest					
cms	cms	ins		cms	ins	ins	
104	-	-	-	104	-	11	24
110	2	61.5	24	110	-	11.5	-
116	3	64	25	116	-	12	26
122	4	66.5	26	122	-	-	-
128	5	69	27	128	-	12.5	28
134	6	71.5	28	134	23	-	-
140	7	74	29	140	24	13	30
146	8	76.5	30	146	25	-	-
152	9	79	31	152	26	13.5	32
158	10	81.5	32	-	27	-	-
163	11	84	33	-	28	14	34
168	12	86.5	34	-	29	-	-
173	13	89	35	-	30	14.5	36
178	14	91.5	36	-	31	-	-

## PLUS SIZE CONVERSION CHART

Size	Height		Waist to fit	
	cm	inch	cm	inch
Plus 9	140	55	102	40
Plus 10	146	57.5	104	41
Plus 11	152	60	106	42
Plus 12	158	62.5	108	43
Plus 13	160	63	110	43.5
Plus 14	163	64.5	112	44
Plus 15	165	65	114	45
Plus 16	168	66	116	46
Plus 17	170	67	118	47
Plus 18	173	68.5	120	48

The articles of school uniform described in this brochure as 'junior' are held out for sale to young children aged 13 years or less. Accordingly VAT will be charged at zero rate. Other articles described as 'senior' will be charged at the standard rate applicable at the time of invoicing.

We emphasise this is our careful interpretation of the current VAT regulations and at the same time point out it is the responsibility of each trading entity to satisfy themselves with how VAT is applied and collected.

